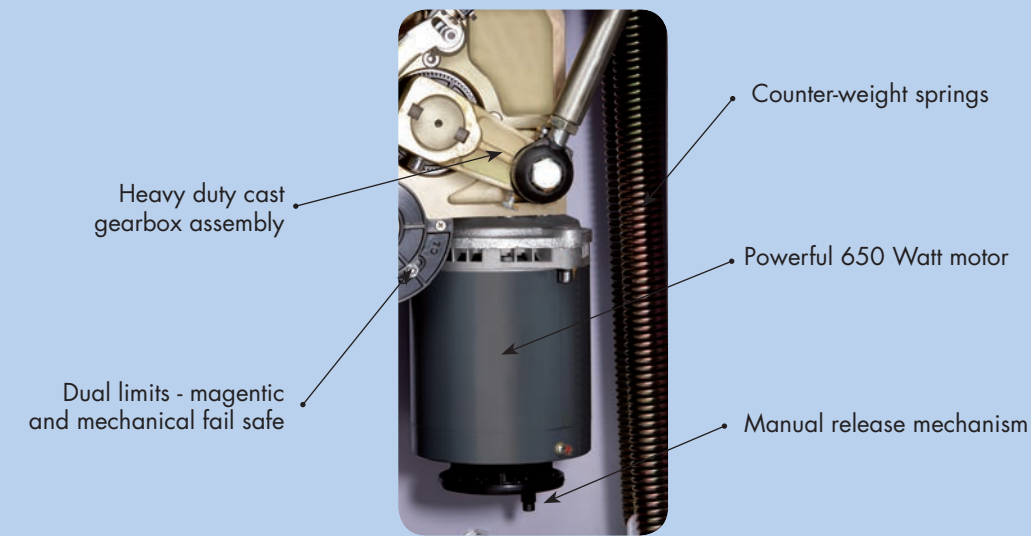
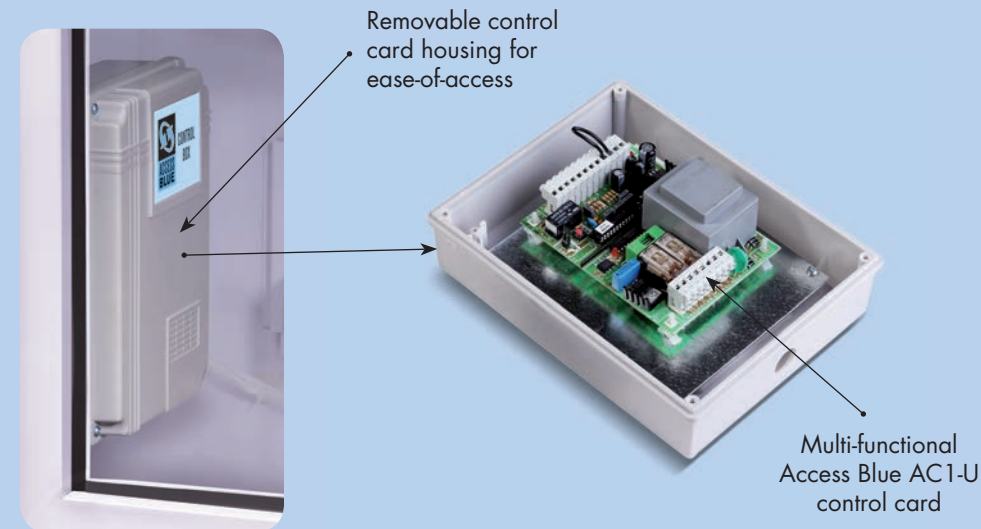


Access Blue traffic barrier features:

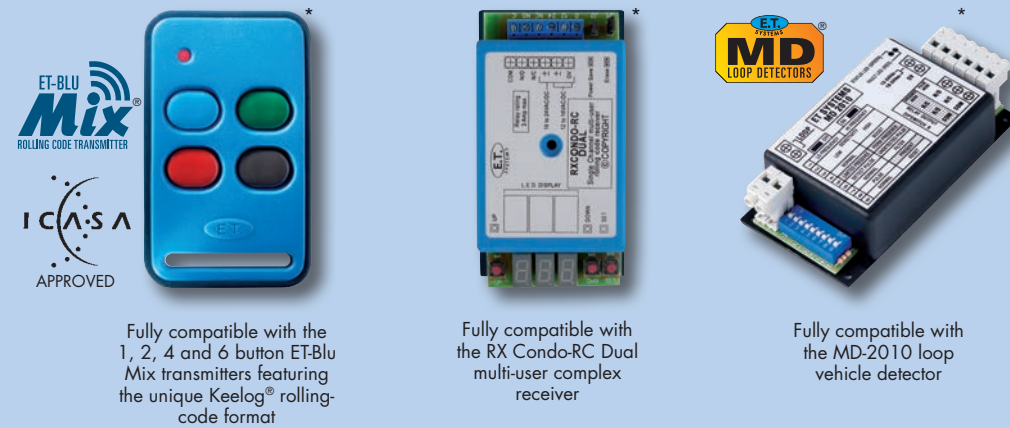
Motor assembly



Control card housing



Fully compatible with ET Systems transmitters, receivers and accessories



Take control of your world

*Optional extras. Products not to scale. The ET-Blu Mix Rolling-Code series complies with current S.A.I.A and by-law 25 requirements. Technical specifications subject to change.

Cape Town (Southern Suburbs)

15 Nelson Road, Observatory, Cape Town
Tel: +27 21 404 0800 • Fax: +27 21 447 7794 • E-mail: sales@et.co.za

Cape Town (Northern Suburbs)

2 Kiewiet Close, Okavango, Brackenfell
Tel: +27 21 982 8556 • Fax: +27 21 982 8299 • E-mail: sales@et.co.za

Port Elizabeth

12 Parkin Street, North End, Port Elizabeth
Tel: +27 41 487 0400 • Fax: +27 41 487 0404 • E-mail: salespe@et.co.za

Durban

Unit 6, 24 Alexander Road, Westmead, Pinetown
Tel: +27 31 700 6694 • Fax: +27 31 700 4574 • E-mail: saleskzn@et.co.za

Gauteng

Unit 2, Keymax Park, Samrand, 102 Sterling Road, Kosmosdal, x12, Centurion
Tel: +27 12 657 0439 • Fax: +27 12 657 0587 • E-mail: salesgp@et.co.za

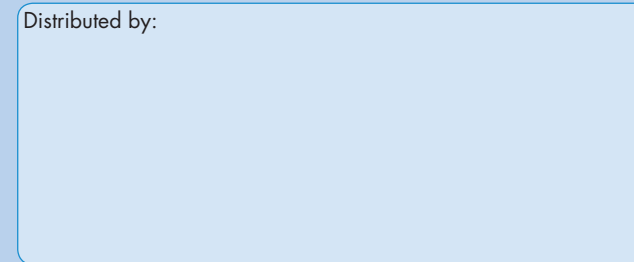
Nelspruit

Unit 16, 25 Rapid Street West, Riverside Industrial Park, Nelspruit
Tel: +27 13 755 4972 • Fax: +27 13 755 4868 • E-mail: salesnelspruit@et.co.za

0860 109 238

www.et.co.za

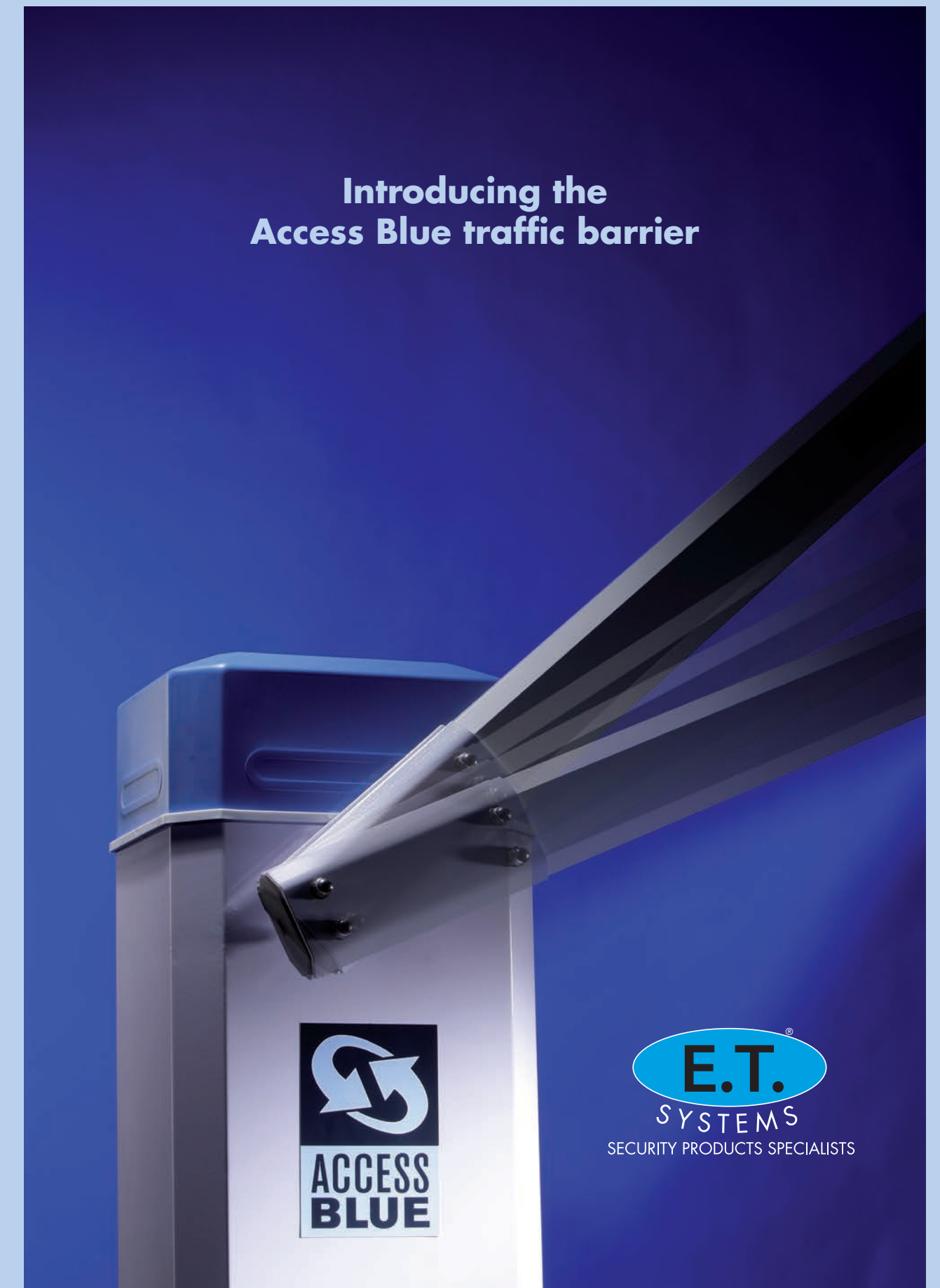
Distributed by:



SECURITY PRODUCTS SPECIALISTS

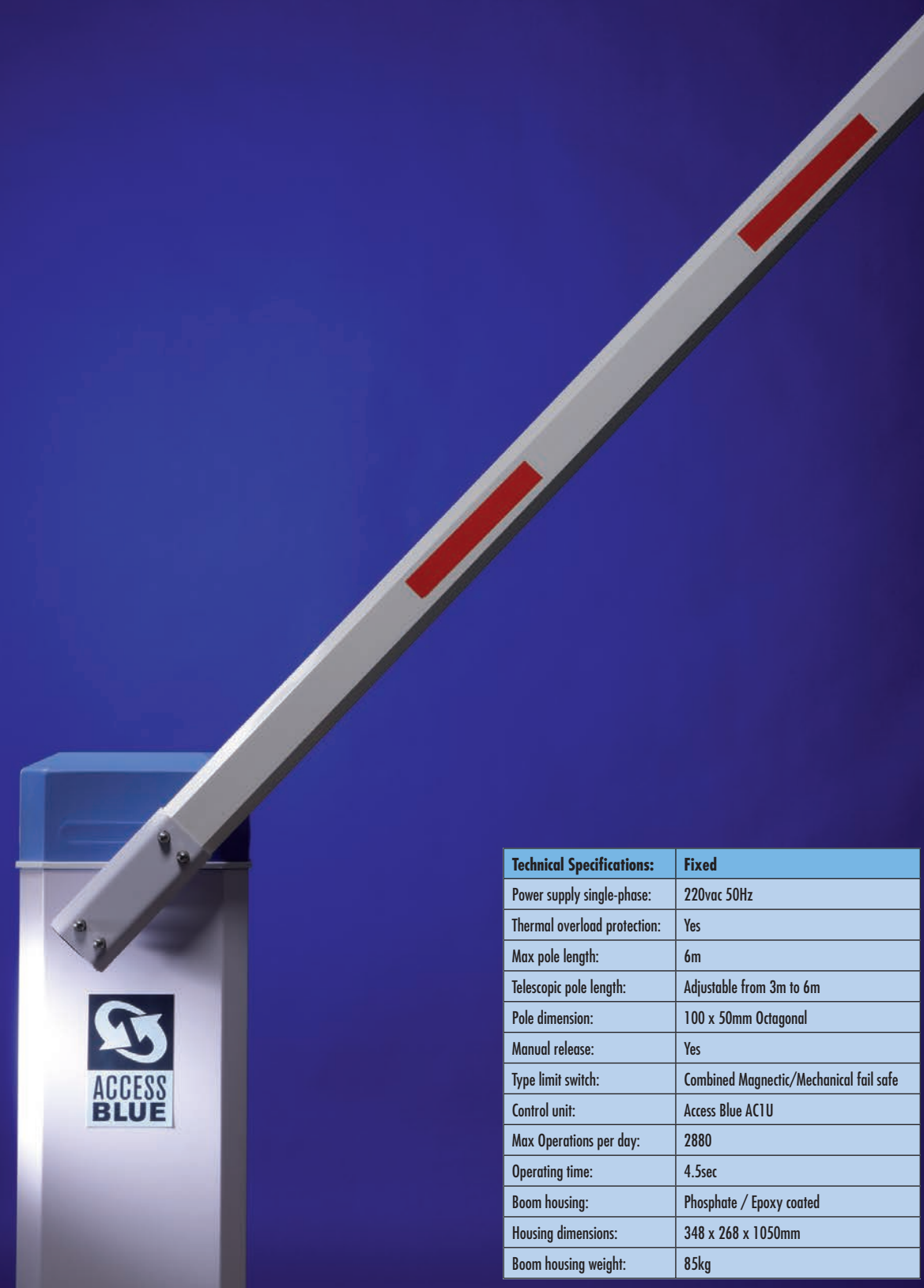
Take control of your world

Introducing the Access Blue traffic barrier



Take control of your world

Access Blue - Fixed



Technical Specifications:	Fixed
Power supply single-phase:	220vac 50Hz
Thermal overload protection:	Yes
Max pole length:	6m
Telescopic pole length:	Adjustable from 3m to 6m
Pole dimension:	100 x 50mm Octagonal
Manual release:	Yes
Type limit switch:	Combined Magnetic/Mechanical fail safe
Control unit:	Access Blue ACIU
Max Operations per day:	2880
Operating time:	4.5sec
Boom housing:	Phosphate / Epoxy coated
Housing dimensions:	348 x 268 x 1050mm
Boom housing weight:	85kg

Take control of your world

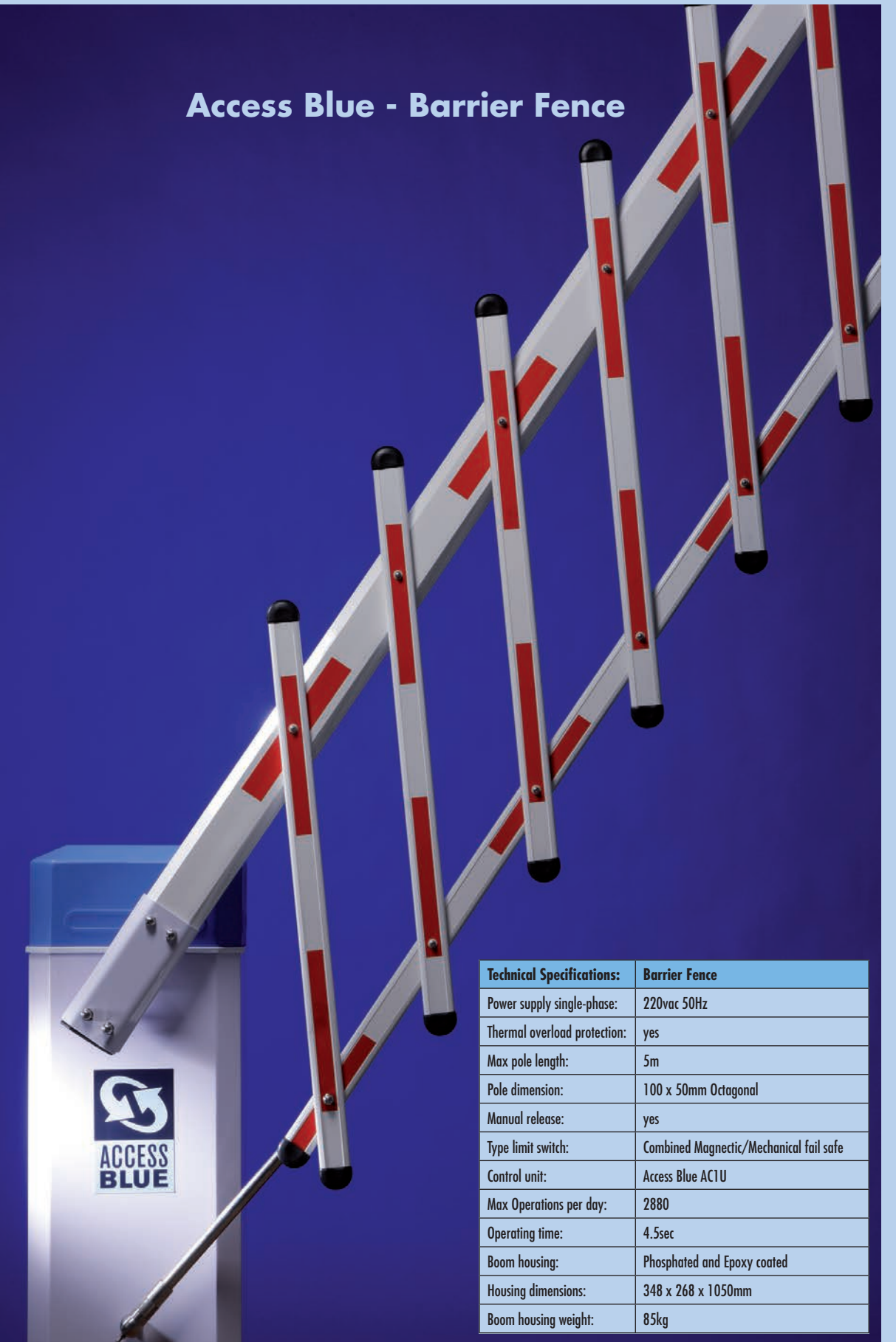
Access Blue - 180° Jackknife



Technical Specifications:	180° Jackknife
Power supply single-phase:	220vac 50Hz
Thermal overload protection:	yes
Max pole length:	3m
Pole dimension:	100 x 50mm Octagonal
Manual release:	yes
Type limit switch:	Combined Magnetic/Mechanical fail safe
Control unit:	Access Blue ACIU
Max Operations per day:	2880
Operating time:	4.5sec
Boom housing:	Phosphated and Epoxy coated
Housing dimensions:	348 x 268 x 1050mm
Boom housing weight:	85kg

Take control of your world

Access Blue - Barrier Fence



Technical Specifications:	Barrier Fence
Power supply single-phase:	220vac 50Hz
Thermal overload protection:	yes
Max pole length:	5m
Pole dimension:	100 x 50mm Octagonal
Manual release:	yes
Type limit switch:	Combined Magnetic/Mechanical fail safe
Control unit:	Access Blue ACIU
Max Operations per day:	2880
Operating time:	4.5sec
Boom housing:	Phosphated and Epoxy coated
Housing dimensions:	348 x 268 x 1050mm
Boom housing weight:	85kg

Take control of your world