

A photograph of a modern, two-story house with a large wooden deck and a pergola. The pergola has a white frame and a dark, slatted roof. On the deck, there is a round table with four wooden chairs. The house has large glass doors and windows. The background shows a green lawn and trees.

NicePatio, the smart and silent solution for pergola automation

Nice

Nice

The pergola becomes smart with Nice

A complete pergola control system

with climate management of light, freezing, wind and rain. And you can even regulate the pergola lighting, thanks to the built-in LED light control.

With **NicePatio**, you can freely customise functioning of the pergola and the lighting, giving priority to comfort.

Patio is a **powerful linear operator**, easy to integrate into the structure of the pergola thanks to its short compact design and it's highly resistant to the effects of atmospheric agents. It operates silently and is 100% comfortable to use.

The compact PatioControl control unit is also easy to install in the structure of the pergola. It automatically regulates opening and closing of the slats and automatically calculates the operating time. The control unit can also manage the pergola **lighting**, thanks to a **lighting module** with four outputs. Each output can control a LED light with ON/OFF - dimmer function.





NicePatio includes a **temperature sensor** and can prevent damage caused by freezing. When the built-in temperature sensor detects a temperature below 2°C, the pergola slats are opened by 3° to prevent them from freezing in the completely closed position.

Additional climatic sensors can also be connected to the control unit.

The **Nemo climatic sensor** allows the position of the slats to be adjusted according to sun, **wind and rain** conditions.

When the **sun** is shining, **NicePatio** can automatically orient the slats in the closed position to protect plants and the area beneath. If, on the other hand, you want to allow the sun to light the pergola area, you can disable this function manually with the "Sun for you" button on the Era P transmitter.



When there is a strong **wind**, the slats are opened to avoid damage caused by wind resistance. When Nemo detects **rain**, the **PatioControl** control unit closes the slats immediately. When the rain stops, the control unit facilitates drying of the pergola roof by opening the slats by 20°



PatioControl is a smart control unit.

If the **Nemo climatic sensor** detects rain and the temperature sensor indicates that the outdoor temperature is dropping below 1°C, PatioControl **senses** that it may snow.

It therefore opens the slats to avoid the weight of the snow damaging the pergola.

The pergola can be conveniently controlled by **Era P Series** radio transmitters, ideal for sun awning, blind, rolling shutter and Venetian blind automations and to manage lights with ON/OFF and dimmer function.



Patio

Linear actuator for pergola slats automation



Powerful, electromechanical and compact linear actuator.

Powerful and sturdy motor, with a pulling force up to 1500 N.

Silent operations

Minimum vibrations for maximum acoustic comfort, with less than 60 dBA noise level.

Simple installation,

thanks to the pre-wired connection cable.

Short and compact, thanks to its 53 mm width only, Nice Patio can be fit into any pergola structure.

Reliable system

The high degree of protection level makes it completely water proof and above all a reliable and long lasting actuator.

Solution available in Kit.

Extended operation without the risk of overheating.

Code	Description	Pcs./pack	Certificates
PATIO1515	Linear actuator with 1500 N pulling force adn 24Vdc supply power	1	CE
PATIOKIT1515	Kit composed by linear actuator with 1500 N pulling force, control unit and temperature sensor	1	CE

TECHNICAL SPECIFICATION

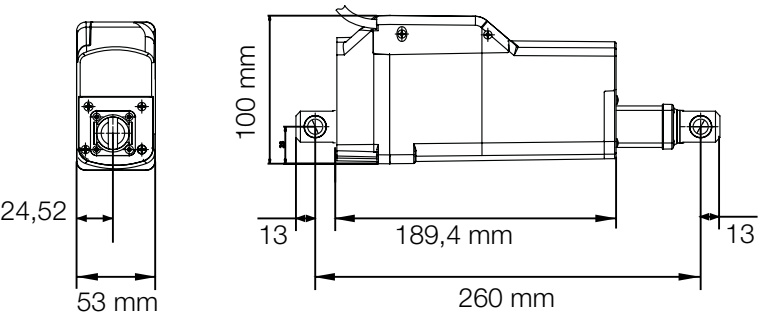
Code	PATIO1515
ELECTRICAL SPECIFICATIONS	
Power supply (Vdc)	24
Current draw (A)	approx 2.3
Power (W)	55
PERFORMANCE	
Force (N)	1500
Speed (mm/s)	6,5
Noise (dBA)	< 60
Stroke travel (mm)	150
Duty cycle	S3 15%
Protection Level (IP)	65
DIMENSIONAL DATA	
Operating temperature (C° Min/Max)	-10 - 60
Weight of motor (Kg)	1,5

POWER CABLE

Cable length 1,5 m, 2 wires in cable



DIMENSIONS



RADIO

24V

PatioControl

Patio operator and LED light control unit



The control unit with built-in radio receiver and LED light control module can manage up to two linear motors and four LED lights.

Built-in radio

The pergola slats can be controlled with Nice radio transmitters and climatic sensors.

Safe, smart system

Thanks to the easy speed adjustment and load control, together with the possibility of configuring partial opening positions.

Temperature sensor

Detects frost and snow on the pergola slats, so avoiding possible damage to the pergola roof.

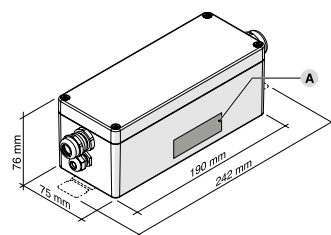
Tough and resistant

Thanks to the robust plastic housing and high protection level, the control unit guarantees reliability in all weather conditions.

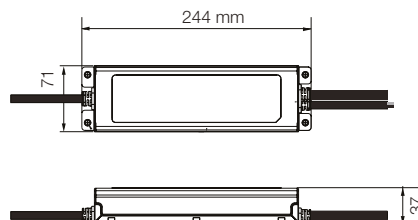
Built-in LED control module

for 24 V LED lights controlled by four independent light channels.

PATIOCONTROL DIMENSIONS



PATIOLP240 DIMENSIONS



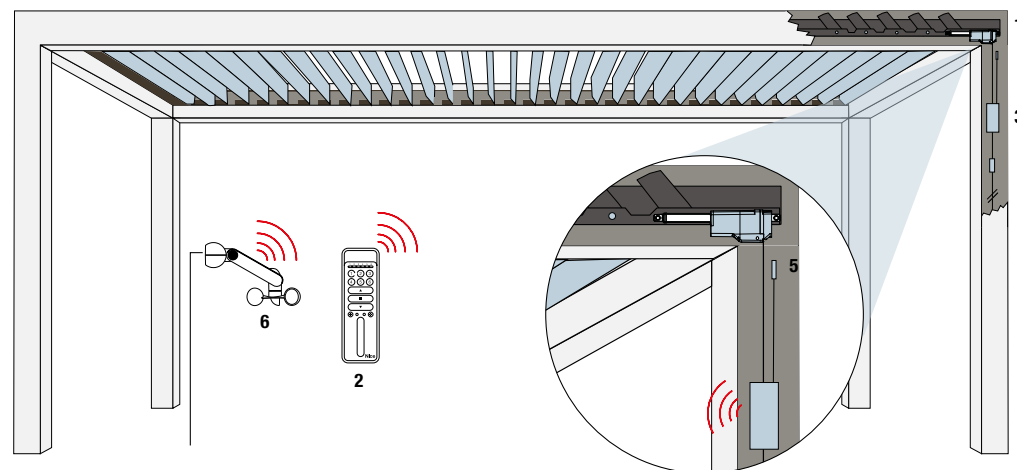
Code	Description	Pcs./pack	Certificates
PATIOCONTROL	Control unit for patios. 24VDC	1	CE
PATIOLP240	240W power supply module	1	CE
PATIOSENSOR	PatioControl temperature sensor	1	CE

TECHNICAL SPECIFICATION

Code	PATIOCONTROL	PATIOLP240
ELECTRICAL SPECIFICATIONS		
Power supply	24 Vdc	100-305 Vac / 142 - 431 Vdc
Current draw (A)	1.5	1.2 - 2.2*
Power (W)	200	240
PERFORMANCE		
Protection Level (IP)	65	67
Radio system	NICE NRC radio system	-
Light module	24V LED lights, 4 light channels	-
Temperature sensor	Frost and snow recognition	-
Radio frequency (MHz)	433	-
DIMENSIONAL DATA		
Dimensions (mm)	190 x 75 x 75	244 x 71 x 37,5
Colour	Silver grey	White
Operating temperature (°C Min/Max)	-20 / 50	-40 / 90

* 1.2 A at 277 Vac, 2.2 A at 115 Vac

INSTALLATION DIAGRAM



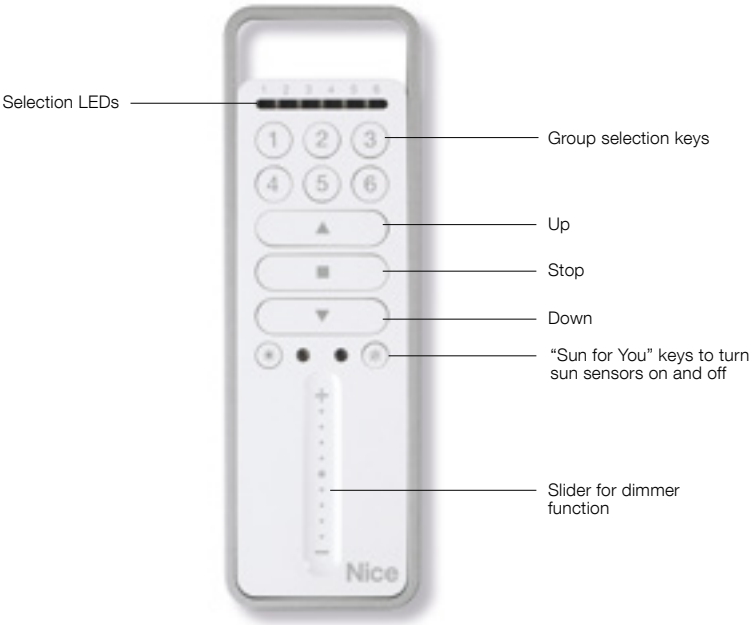
1. Motor 2. Transmitter 3. Control unit 4. Power Supply module 5. Temperature Sensor 6. Climatic sensor

Nice

Nice

Era P Serie

Portable, to control patio, awnings, blinds, rolling shutters and lights



Portable radio transmitters to control patio, awnings, blinds, rolling shutters and lights with ON/OFF function and slider dimmer.

1 and 6 channel versions, to manage up to 6 groups in single, group or multigroup mode, including with separate activation of climatic sensors.

433.92 MHz, rolling code with self-learning.

User friendly with ergonomic design.

Just a click for the right light at all times: the **Sun for You** control keys, with LED display, enable and disable reception of the automatic commands transmitted by the climatic sensors in the installation.

The Era P Vario version features a slider for analogue control of the dimmer function, adjusting the luminosity of the lights.

Easy programming

The same transmitter can be programmed in a number of awnings or shutters to create groups. The Memo Group function enables the last multigroup to be recalled. **New transmitters can be duplicated remotely and automatically** just by placing the new transmitter next to the one already programmed and pressing a key.

Extended autonomy

(two AAA 1.5 V alkaline batteries). **Long range** 200 m in open space, 35 m indoors.

Comfort

Thanks to the presence of the slider and DIMMER function, a simple touch is all it takes to easily adjust the brightness of the LED lights incorporated in the pergola structure.

Code	Description	Pcs./pack.
P1V	Portable transmitter to control 1 electrical load system with slider dimmer or 1 automation group	1
P6SV	Portable transmitter to control 6 systems of electrical loads or automation groups for activation in single or multigroup mode, with slider dimmer and sun on/off keys	1

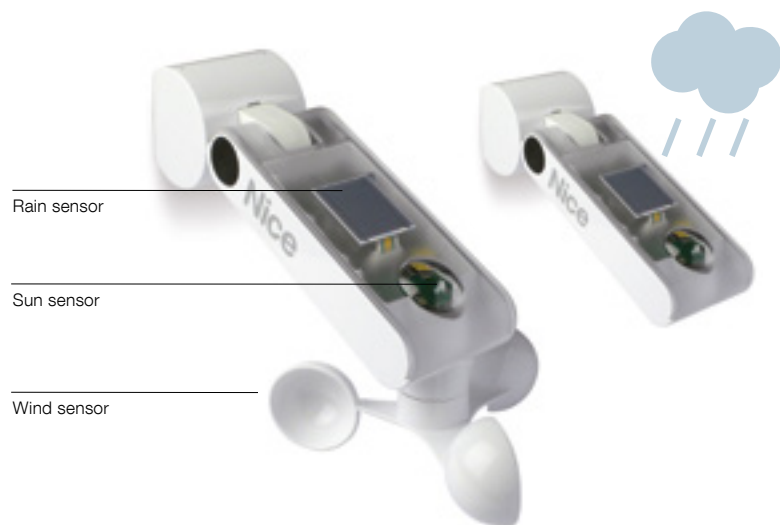
TECHNICAL SPECIFICATION

Code	P1V, P6SV
Power supply (VDC)	Alkaline batteries - 2 x AAA x1.5 V
Battery lifetime	About 2 years with 10 transmissions per day
Frequency	433.92 MHz ± 100 KHz
Protection class (IP)	40 (Use in the home or in protected environments)
Average range (m)	Estimated average range 200 in open space, 35 indoors
Radio coding	Rolling code (o-code)
Operating temperature (°C Min/Max)	-5 - +55
Dimensions (mm)	49x150x14
Weight (g)	85



Nemo WSRT / SRT

Wind-Sun-Rain sensor



Radio-controlled Wind-Sun-Rain and Sun-Rain sensor, powered by mains electricity.

Available in two versions

- with "Wind-Sun-Rain" sensor;
- with "Sun-Rain" sensor.

Extended duration thanks to the latest generation built-in sensor, in Teflon-coated ceramic to ensure exceptional resistance to atmospheric agents.

Practical

Thanks **to the automatic calibration**, the sensor adapts to the various ambient conditions.

Safe and reliable

The built-in heating element avoids misinterpretations of weather conditions caused by the build-up of humidity.

The sensor is powered by mains electricity

and communicates via radio with the control unit which controls movement of the pergola or shutters according to the pulses received.

Simple installation and wiring thanks to the terminal board integrated in the fixing base and the quick connector.

Programming in linear mode: trimmer adjustment of activation thresholds: "Wind" up to 80 km/h and "Sun" up to 60 klux.

The rain sensor requires no adjustment (on-off).

Simple memorisation of settings by means of the practical built-in pushbutton. When the trimmers are set to the test threshold, operation of the Sun-Wind sensors can be verified without the need to simulate the presence of atmospheric events.

Optimised sensitivity to vertical air currents.

Control and indicator system

A two-colour LED (green and red; lit, off or flashing) provides information on sensor status (set threshold exceeded, malfunctions etc.).

Nemo is compatible with

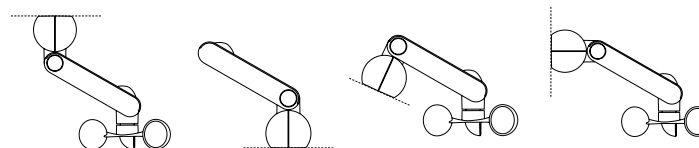
- control units with built-in receiver.
- Nice tubular motors with built-in receiver;

Code	Description
NEMO WSCT	Radio-controlled Wind-Sun-Rain sensor, powered by mains electricity
NEMO SRT	Radio-controlled Sun-Rain sensor, powered by mains electricity

N.B. Nemo may not be compatible with motors produced before June 2004

ADJUSTABLE

Nemo can be installed on surfaces sloping at different angles



TECHNICAL SPECIFICATION

Code	NEMO WSCT	NEMO SRT
Powered by built-in photovoltaic cells (mWp)	-	
Powered by mains electricity (Vac 50/60 Hz)	120/230	
Transmission frequency (MHz)	433.92 with built-in antenna	
Radio coding	TTS (compatible with Era P, NiceWay transmitters)	
Radiated power (mW)	about 1	
Range	100 m in open space; 20 m indoors	
Protection class (IP)	44	
Operating temperature (°C min/max)	-20 - +55	
Dimensions (mm)	60x229x151 h	60x288x105 h
Weight (g)	400	380

TECHNICAL SPECIFICATIONS

Code	NEMO WSCT	NEMO SRT
WIND SENSOR		
Measurement range (km/h)	0 - 125	-
Resolution (km/h)	1	-
Threshold setting (km/h)	5 - 80	-
Pre-alarm	After 24 hours without wind	-
SUN SENSOR		
Measurement range (klux)	3 - 80	
Resolution(klux)	1	
Threshold setting (klux)	5 - 60	
Pre-alarm	After 24 hours without variations in the light	
RAIN SENSOR		
Measurement range	On-Off	
Pre-alarm	After 30 days without rain	

Technology as simple as a gesture



Nice, easy solutions for Home and Building.

Systems for the automation and control of gates, garage doors, blinds, shutters and alarm systems, with integrated management using smart and intuitive interfaces: practical, functional and elegant solutions to help you enjoy your living spaces to the full.

Nice

Nice SpA
Oderzo TV Italy

www.niceforyou.com



NiceLoveEarth

Nice cares for the environment.
Using natural paper it avoids excessive
use of raw materials and forest exploitation.
Waste is reduced, energy is saved and
climate quality is improved.

Our products and technologies
are protected with patents and design trademark
registrations. Any violation of our rights will be
legally prosecuted.