

# Nice

## PLA17

### **Adaptation bracket from POP to SPOP**

**EN** - Instructions and warnings for installation

## CONTENTS

<b>1</b>	<b>GENERAL SAFETY WARNINGS AND PRECAUTIONS</b>	<b>2</b>
1.1	General warnings	2
<b>2</b>	<b>PRODUCT DESCRIPTION</b>	<b>3</b>
2.1	List of parts making up the kit	3
<b>3</b>	<b>INSTALLATION</b>	<b>4</b>
3.1	Pre-installation checks	4
3.2	Installing the kit	4
<b>4</b>	<b>PRODUCT DISPOSAL</b>	<b>7</b>

### 1.1 GENERAL WARNINGS



**WARNING! Important safety instructions. Observe all the instructions as improper installation may cause serious damages.**



**WARNING! Important safety instructions. It is important to comply with these instructions to ensure personal safety. Store these instructions carefully.**



**According to the most recent European legislation, the implementation of an automation system must comply with the harmonised standards set forth in the Machinery Directive in force, which allow for declaring the presumed conformity of the automation. On account of this, all operations regarding connection to the mains electricity, as well as product testing, commissioning and maintenance, must be performed exclusively by a qualified and skilled technician.**

- Before proceeding with the product's installation, check that all the materials are in good working order and suited to the intended applications.
- The product is not intended for use by persons (including children) with reduced physical, sensory or mental capacities, nor by anyone lacking sufficient experience or familiarity with the product.
- Handle the product with care during installation, taking care to avoid crushing, knocks, falls or contact with liquids of any kind. Keep the product away from sources of heat and open flames. Failure to observe the above can damage the product and increase the risk of danger or malfunctions. Should this happen, stop installation immediately and contact Customer Service.
- The manufacturer assumes no liability for damage to property, items or persons resulting from non-compliance with the assembly instructions. In such cases, the warranty for material defects is excluded.
- Cleaning and maintenance reserved for the user must not be carried out by unsupervised children.
- The packing materials of the product must be disposed of in compliance with local regulations.

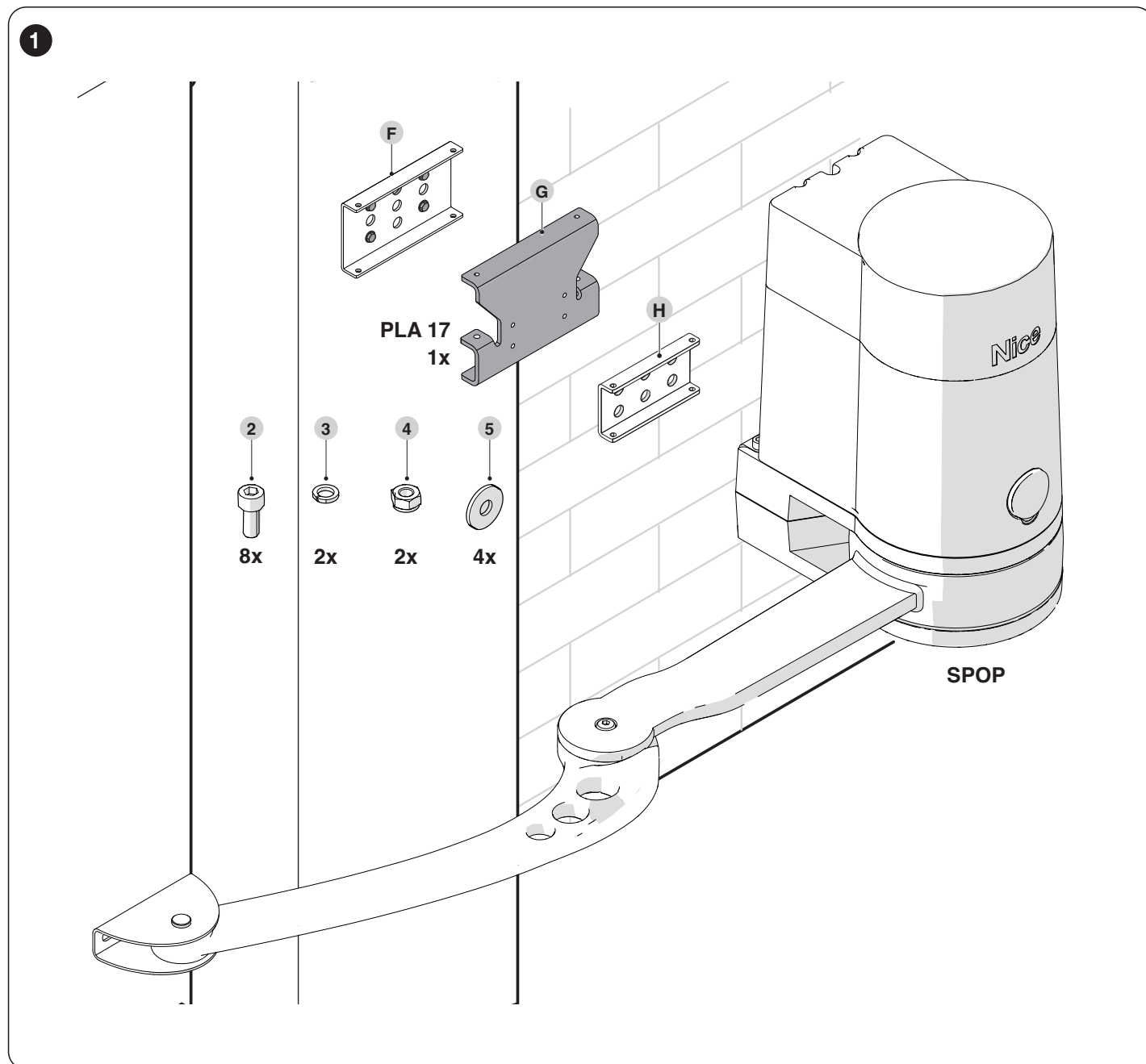
## 2 PRODUCT DESCRIPTION

The adaptation bracket is necessary whenever a POP motor must be replaced with a SPOP motor.

### 2.1 LIST OF PARTS MAKING UP THE KIT

The kit includes:

1. Adaptation bracket (1x);
2. 6x14 metric-thread socket head cap screw 8.8 UNI 5931 white galvanised (8x);
3. Elastic washer for galvanised white low head cap screw DIN 7980 (2x);
4. M6 self-locking low hexagonal nut, white galvanised UNI 7474 (2x);
5. M6 flat wide washer 6.4x18x1.6 UNI 6593 ISO 7093 (4x).



## 3 INSTALLATION

### 3.1 PRE-INSTALLATION CHECKS

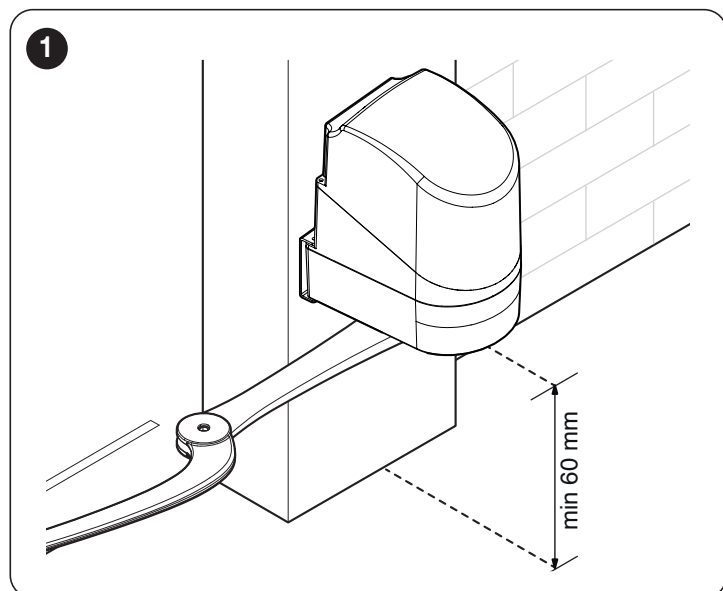
**!** The installation must be carried out by qualified personnel in compliance with the current legislation, standards and regulations, and with the instructions provided in this manual.

**⚡** All electrical connections must be made with the system disconnected from the mains electricity and with the back-up battery (if present) disconnected.

Before proceeding with the product's installation, it is necessary to:

- check the integrity of the supply;
- check that all the materials are in good working order and suitable for their intended use;
- keep the product away from heat sources and open flames and acid, saline or potentially explosive atmospheres; these may damage the product and cause malfunctions or dangerous situations.

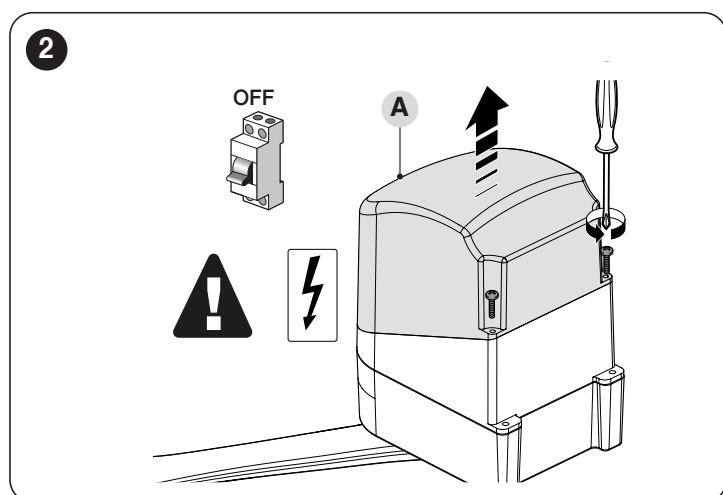
**!** Before starting work, make sure that the POP motor is AT LEAST 60 mm above the ground.



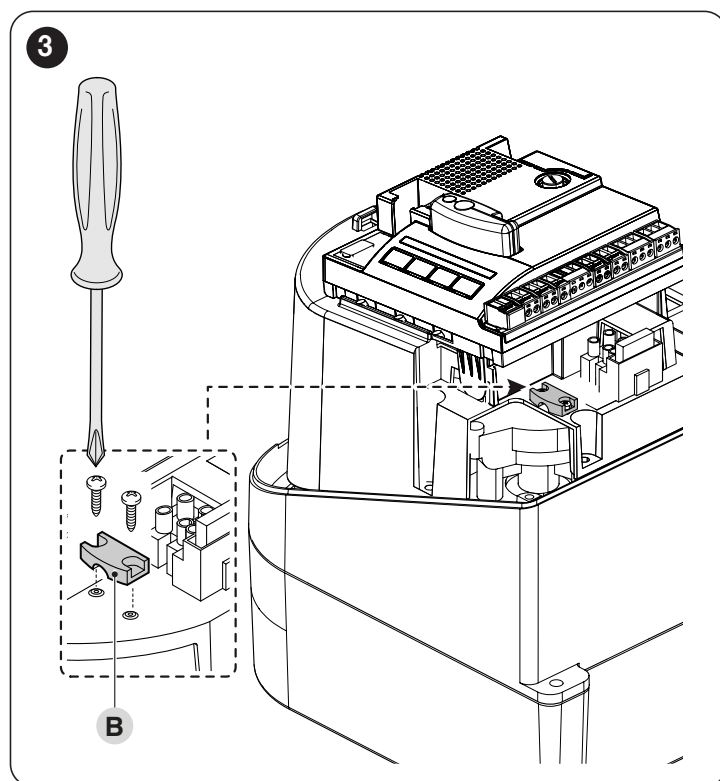
### 3.2 INSTALLING THE KIT

**⚡** Danger of electric shock: before starting work, disconnect all the power supply sources.

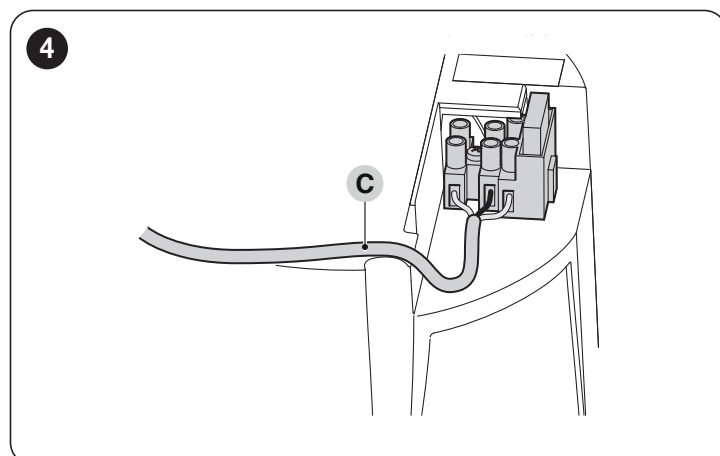
1. Disconnect the control unit from the power supply.
2. Open the gearmotor's cover (A).



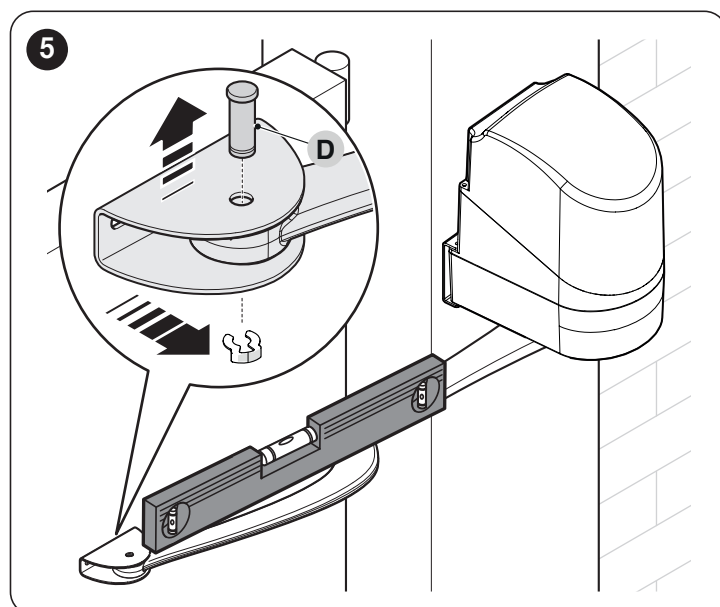
3. Loosen the cable clamp (B).



4. Disconnect the power cable (C) and the cables of the ancillary devices present.



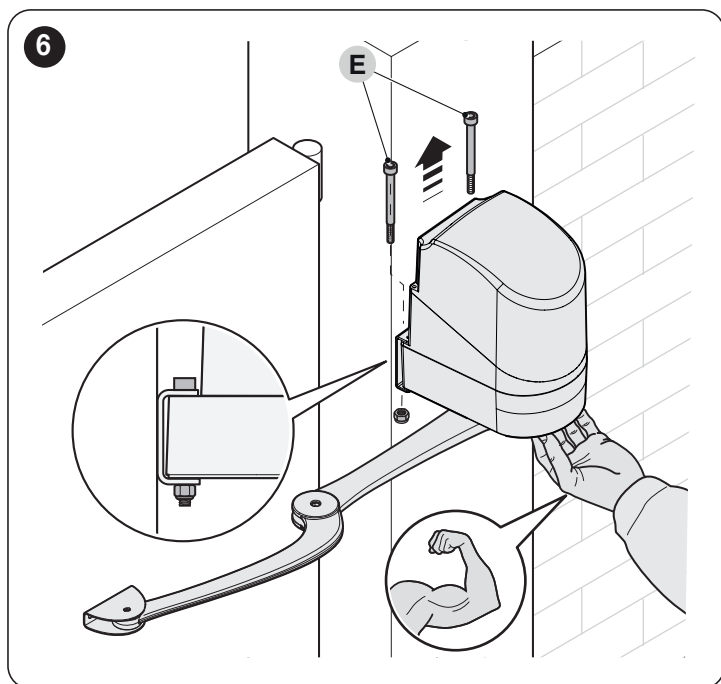
5. Make sure that the installation was carried out by keeping the elements (bracket-arm-motor) aligned horizontally.
6. Remove the stop ring and the relative pin (D).



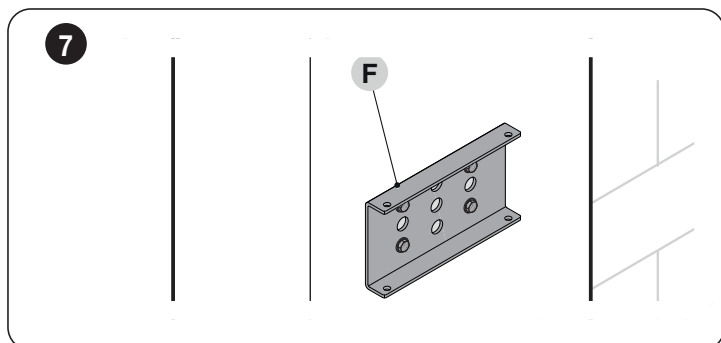


**The motor is heavy: sustain it with force during the dismantling phase.**

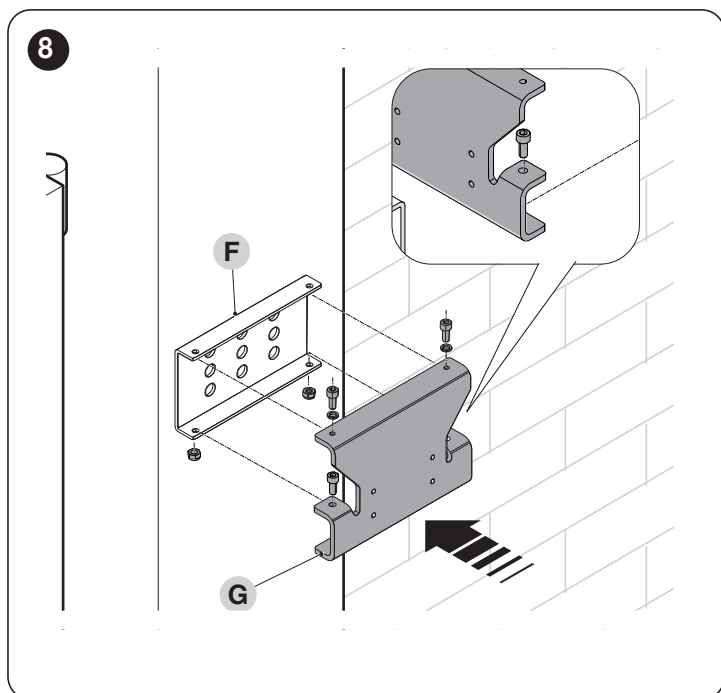
7. Remove the gearmotor from the bracket by loosening the two M6x100 screws (E).



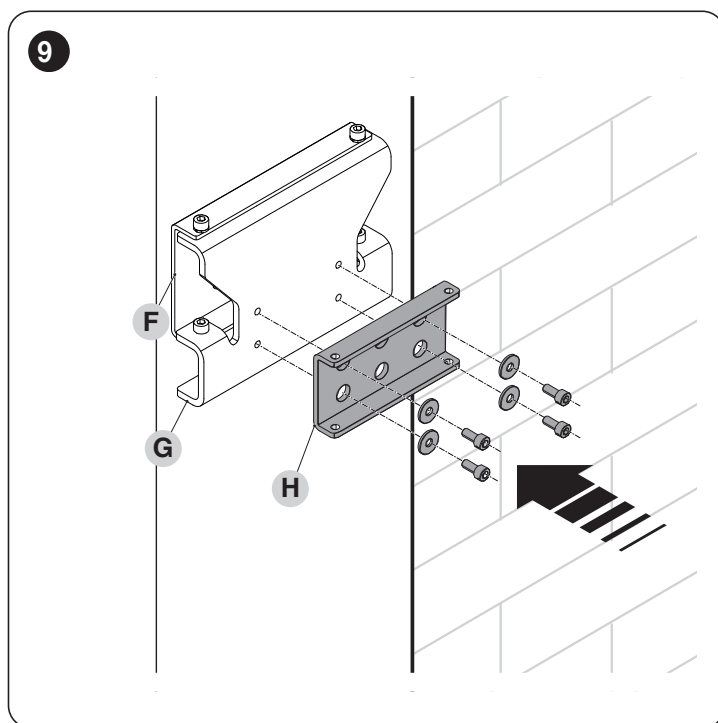
**Do NOT remove the fixing bracket (F).**



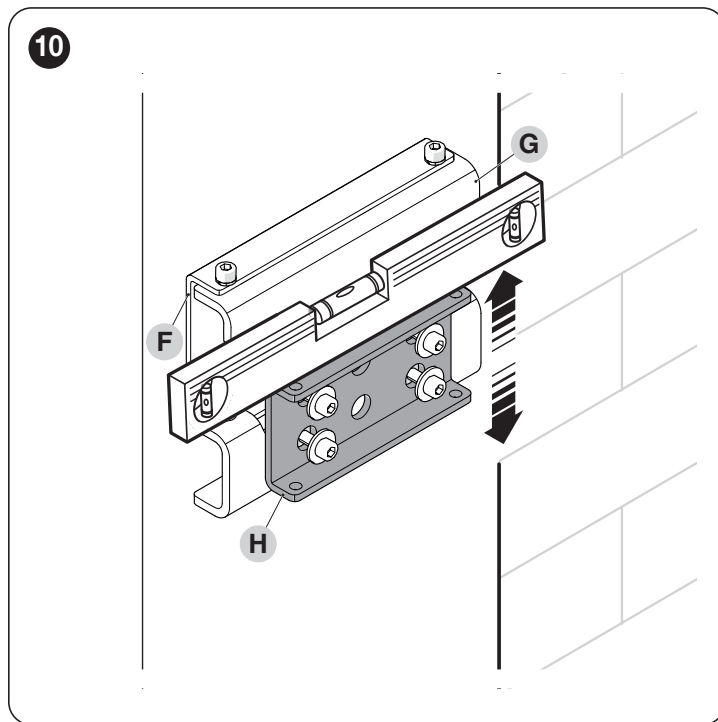
8. Fasten the adaptation bracket (G) to the fixing bracket (F) using the screws, nuts and washers provided ("Figure 9").



9. Fasten the SPOP bracket (H) to the adaptation bracket (G) using the screws and washers provided, without tightening the screws ("Figure 10").



10. Fasten the SPOP bracket (H) to the adaptation bracket (G) making sure that it is aligned with the horizontal axis ("Figure 11").

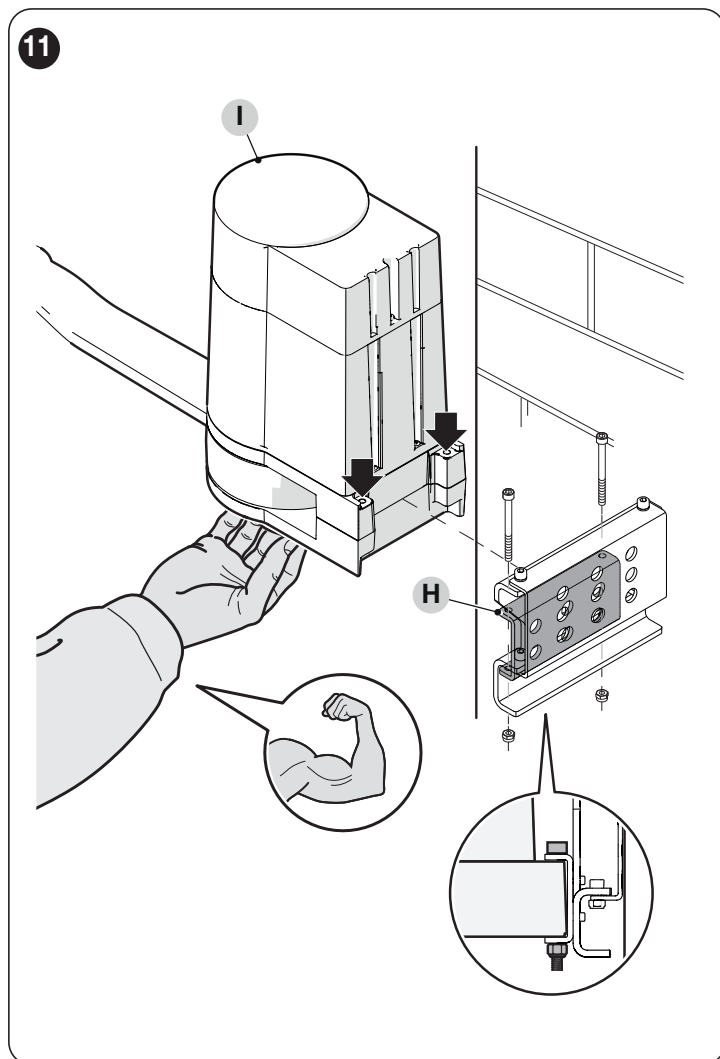


**Tighten the screws vigorously.**

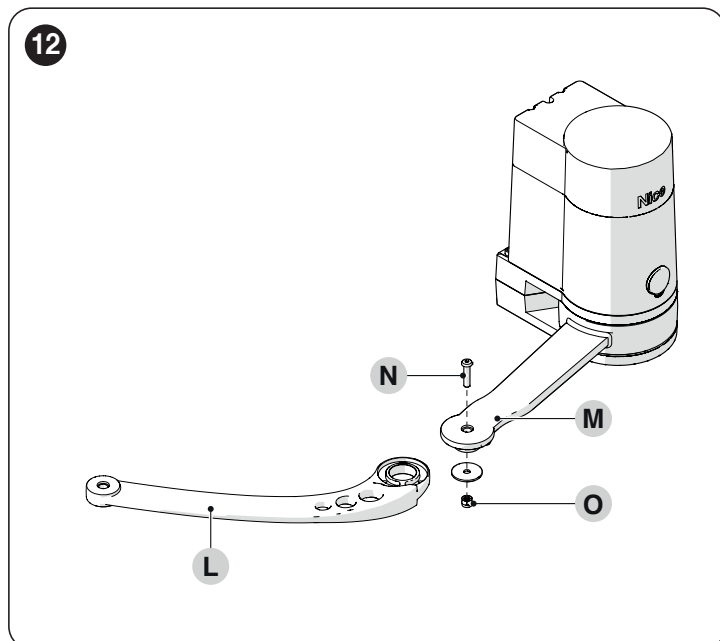


**The motor is heavy: sustain it with force during the assembly phase.**

11. Fasten the gearmotor (**I**) to the bracket (**H**) using the two V6x70 screws and the respective M8 nuts provided with the SPOP gearmotor ("Figure 12").



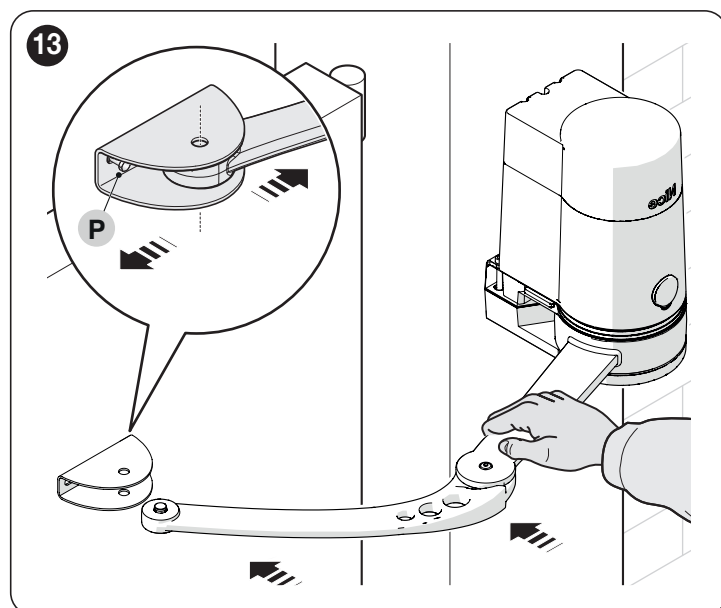
12. Fasten the curved arm (**L**) to the straight arm (**M**) using the pin (**N**) and the self-locking nut (**O**) ("Figure 13").



13. Move the arm towards the bracket.
14. Verify that the hole of the arm in the extended position is aligned with the hole of the bracket ("Figure 14").



**Loosen the fixing screw (P) of the bracket and adjust the horizontal position if necessary.**



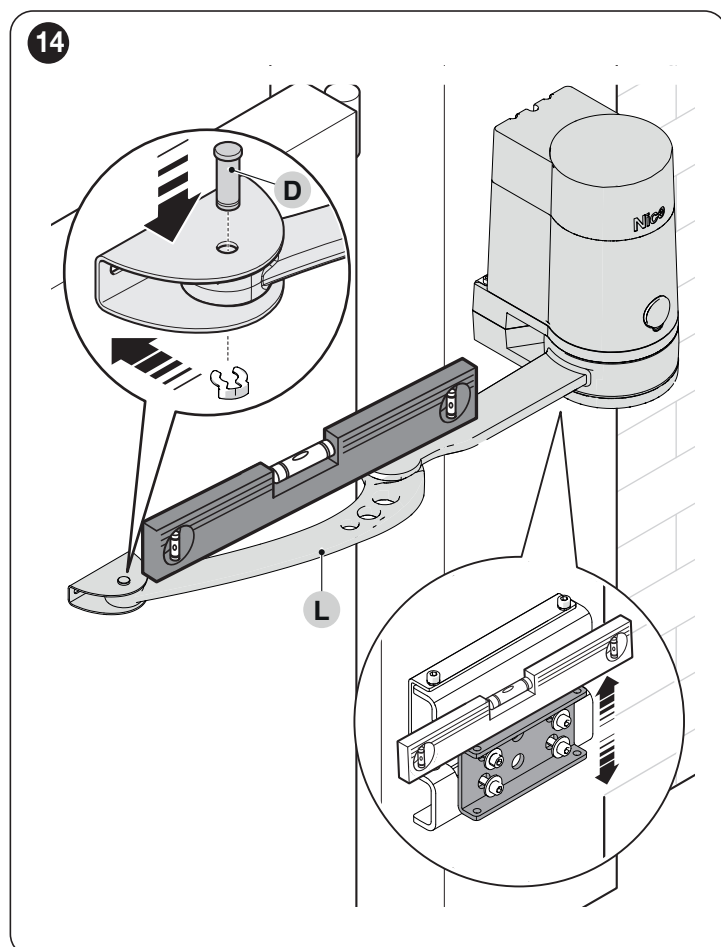
- Fasten the arm (**L**) to the bracket using the previously removed pin (**D**) and ring ("Figure 15").



**Tighten the screws of the bracket vigorously.**



**Adjust the vertical position of the SPOP bracket to ensure that the bracket and arm are aligned, should this be necessary.**



**Refer to the SPOP gearmotor manual for the phases subsequent to the assembly.**

## 4 PRODUCT DISPOSAL

As in installation, also at the end of product lifetime, the disassembly and scrapping operations must be performed by qualified personnel.

This product is made of various types of materials, some of which can be recycled while others must be scrapped. Seek information on the recycling and disposal systems envisaged in the local regulations in your area for this product category.



### WARNING

**Certain parts of the product can contain pollutants or dangerous substances that, if dispersed into the environment, could be detrimental to the environment itself and to human health.**



**As indicated by the symbol alongside, disposal of this product in domestic waste is strictly prohibited. Separate the waste into categories for disposal, according to the methods set forth in the regulations in force in your area, or return the product to the retailer when purchasing a new equivalent product.**



### WARNING

**Local regulations may envisage the application of heavy fines in the event of improper disposal of this product.**



**Nice S.p.A.**  
Via Callalta, 1  
31046 Oderzo TV (Italy)  
info@niceforyou.com

[www.niceforyou.com](http://www.niceforyou.com)