

# MyEye

## Bullet

### IP Smart Bullet Camera

**EN** - Instructions and warnings for installation and use

**Nice**

## CONTENTS

<b>1 - FOREWORD</b>	<b>3</b>
1.1 - General	3
1.2 - Safety Instructions	3
1.3 - Privacy Protection Notice	3
1.4 - About this Guide	3
<b>2 - IMPORTANT SAFEGUARDS AND WARNINGS</b>	<b>4</b>
2.1 - Electrical safety	4
2.2 - Environment	4
2.3 - Operation and Daily Maintenance	4
<b>3 - INTRODUCTION</b>	<b>5</b>
3.1 - Cable	5
3.2 - Connecting Alarm Input/output	5
<b>4 - NETWORK CONFIGURATION</b>	<b>6</b>
4.1 - Initializing Device (LAN connection)	6
4.2 - Modifying Device IP Address (LAN connection)	7
4.3 - Logging into the Web Interface	8
<b>5 - INSTALLATION</b>	<b>8</b>
5.1 - Dimensions	8
5.2 - Installing Device	8
5.2.1 - Installation method	8
5.2.2 - Installing SD Card (Optional)	9
5.2.3 - Attaching Device	9
5.2.4 - Installing Waterproof Connector (Optional)	10
5.2.5 - Adjusting Lens Angle	11
<b>6 - ADDITIONAL INFORMATION</b>	<b>11</b>

# 1 FOREWORD

## 1.1 - General

This Quick Start Guide (hereinafter referred to as “the Guide”) introduces the functions, installation, and operations of the camera.

## 1.2 - Safety Instructions

The following categorized signal words with defined meaning might appear in the guide.

Signal Words	Meaning
Warning	Indicates a medium or low potential hazard which could result in slight or moderate injury, if not avoided.
Caution	Indicates a potential risk that may result in property damage, data loss, lower performance, or unpredictable result, if not avoided.
Meaning	Provides additional information as the emphasis and supplement to the text.

## 1.3 - Privacy Protection Notice

As the device user or data controller, you might collect personal data of others such as faces, fingerprints, car plate numbers, Email addresses, phone numbers, GPS, and so on. You need to be in compliance with the local privacy protection laws and regulations to protect the legitimate rights and interests of other people by implementing measures including but not limited to: providing clear and visible identification to inform the data subject about the existence of the surveillance area and providing related contact.

## 1.4 - About this Guide

- The Guide is for reference only. If there is inconsistency between the Guide and the actual product, the actual product shall prevail.
- We are not liable for any loss caused by the operations that do not comply with the Guide.
- The Guide would be updated according to the latest laws and regulations of related regions. For detailed information, see the QR code or our official website. If there is inconsistency between the paper User’s Guide and the electronic version, the electronic version shall prevail.
- All the designs and software are subject to change without prior written notice. The product updates might cause some differences between the actual product and the Guide. Please contact customer service for the latest program and supplementary documentation.
- There still might be a deviation in technical data, functions, and operations description, or print errors. If there is any doubt or dispute, please refer to our final explanation.
- All trademarks, registered trademarks, and the company names in the Guide are the properties of their respective owners.
- Please visit our website and contact the supplier or customer service if there is any problem when using the device.
- If there is any uncertainty or controversy, please refer to our final explanation.

## 2 IMPORTANT SAFEGUARDS AND WARNINGS

### 2.1 - Electrical safety

- All the installation and operations described here should conform to the local electric safety rules.
- Use a power supply that meets SELV (safety extra low voltage) requirements, and supply power with rated voltage that conforms to Limited Power Source in IEC60950-1. For specific power supply requirements, refer to device labels.
- Make sure the power supply is correct before operating the device.
- A readily accessible disconnect device shall be incorporated into the building installation wiring.
- Prevent the power cable from being trampled or pressed, especially the plug, power socket, and the junction extruded from the device.

### 2.2 - Environment

- Do not aim the device to focus on strong light, such as lamp light and sunlight; otherwise, it may cause over brightness or light marks, which are not the device malfunction, and affect the longevity of Complementary Metal-Oxide Semiconductor (CMOS).
- Do not place the device in a damp or dusty environment, extremely hot or cold temperatures, or locations with strong electromagnetic radiation or unstable lighting.
- Keep the device away from any liquid to avoid damage to the internal components.
- Keep the indoor device away from rain or dampness to avoid fire or lightning.
- Keep sound ventilation to avoid heat accumulation.
- Transport, use, and store the device within the range of allowed humidity and temperature.
- Heavy stress, violent vibration, or water splash are not allowed during transportation, storage, and installation.
- Pack the device with standard factory packaging or the equivalent material when transporting it.
- Install the device in a location where only professional staff with relevant knowledge of safeguards and warnings can access it. The accidental injury might happen to the non-professionals who enter the installation area when the device is operating normally.

### 2.3 - Operation and Daily Maintenance

- Do not touch the heat dissipation component of the device to avoid scalds.
- Carefully follow the instructions in the Guide when performing any disassembling of the device; unprofessional disassembling may cause water leakage or poor image quality. Please contact after-sale service for desiccant replacement if there is condensed fog found on the lens after unpacking or when the desiccant turns green (Not all models are included with the desiccant).
- It is recommended to use the device together with a lightning arrester to improve lightning protection effect.
- It is recommended to connect the grounding hole to the ground to enhance the reliability of the device.
- Do not touch the image sensor directly (CMOS). Dust and dirt could be removed with an air blower, or you can wipe the lens gently with a soft cloth moistened with alcohol.
- The device body can be cleaned with a soft dry cloth, which can also be used to remove stubborn stains when moistened with mild detergent. To avoid possible damage to the device body coating which could cause a decrease in performance, do not use volatile solvents such as alcohol, benzene, diluent, or strong and abrasive detergents.
- The dome cover is an optical component, do not touch or wipe the cover with your hands directly during installation or operation. To remove dust, grease, or fingerprints, wipe gently with moistened oil-free cotton with diethyl or a moistened soft cloth. You can also use an air blower to remove dust.

### Warning

- Strengthen the protection of your network, device data, and personal information through measures that include, but are not limited to, using a strong password, modifying your password regularly, updating your device software to the latest version, and setting up a private computer network. For some devices with old software versions, the ONVIF password will not be automatically modified when the system password is changed, and you will need to update the software or manually update the ONVIF password.
- Use standard components or accessories provided by the manufacturer and ensure that the device is installed and maintained by professional engineers.
- The image sensor surface should not be exposed to laser beam radiation in the environment where the laser beam device is used.
- Do not power the device with two or more power sources. Unless stated otherwise. Failure to follow these instructions may damage the device.

## 3 INTRODUCTION

### 3.1 - Cable

#### Note:

- Cable types might vary with different devices. The actual product shall prevail.
- Please waterproof all the cable joints with insulating tape and waterproof tape to avoid short circuits and water damage. For the detailed operation, see the FAQ manual.

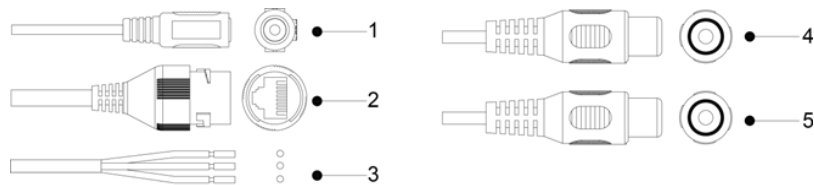


Figure 1-1 Cable list For more information about cable ports, see Table 1-1.

For more information about cable ports, see Table 1-1.

Port	Port Name	Description
1	Power input	Inputs DC 12V power. Please be sure to supply power as instructed in the Guide. Device abnormality or damage could occur if power is not supplied correctly.
2	Ethernet	<ul style="list-style-type: none"><li>• Connects to the network with a network cable.</li><li>• Provides power to the device with PoE.</li></ul> PoE is available with selected models.
3	Alarm I/O	Includes alarm signal input and output ports. For detailed information, see Table 1-2. Available with selected models.
4	Audio input	Connects to the sound-pick-up device to receive the audio signal. Available with selected models.
5	Audio output	Connects to the speaker to output audio signal. Available with selected models.
Alarm I/O	ALARM_OUT	Outputs alarm signal to the alarm device.
	ALARM_IN	Receives the switch signal of an external alarm source.
	ALARM_GND	Ground connection.

### 3.2 - Connecting Alarm Input/output

Alarm input/output is available with selected models

1. Connect the alarm input of the device to the alarm input end of the I/O port, see Figure 1-2

The device collects different states of alarm input port when the input signal is idling and being grounded.

- The device collects logic “1” when the input signal is connecting to +3V to +5V or idling.
- The device collects logic “0” when the input signal is grounded.

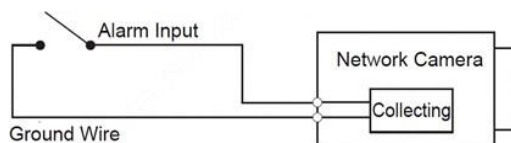


Figure 1-2 Alarm input

2. Connect the alarm output device to the alarm output end of the I/O port. The alarm output is an open-drain output that works in the following modes.
  - Mode A: Level application. The alarm outputs high and low levels, and the alarm outlet is OD, which requires external pull-up resistance(10K Ohm typical) to work. The maximum external pull-up level is 12V, the maximum port current is 300mA and the default output signal is high level (external pull-up voltage). The default output signal switches to a low level when there is alarm output (As long as the operating current is below 300mA, the output low-level voltage is lower than 0.8V).
  - Mode B: Switch application. The alarm output is used to drive an external circuit, the maximum voltage is 12V and the maximum current is 300mA. If the voltage is higher than 12V, please use an additional electric relay.

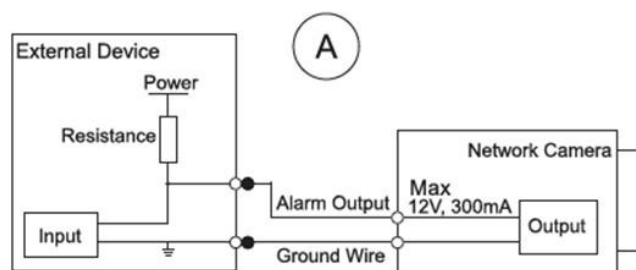


Figure 1-3 Mode A

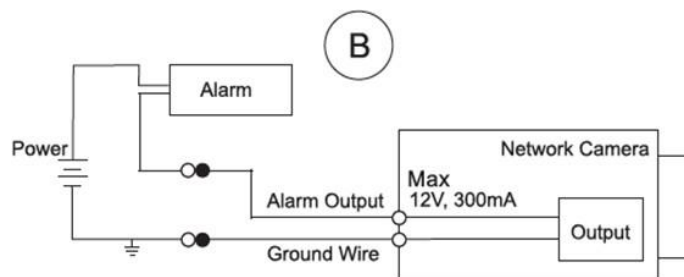


Figure 1-4 Mode B

3. Log into the web interface and configure alarm input and alarm output in the alarm setting.

- The alarm input in the web interface is corresponding to the alarm input end of the I/O port. There will be high-level and low-level alarm signals generated by the alarm input device when an alarm occurs, set the input mode to "NO" (default) if the alarm input signal is logic "0" and to "NC" if the alarm input signal is logic "1".
- The alarm output in the web interface is corresponding to the alarm output end of the device, which is also the alarm output end of the I/O port.

## 4 NETWORK CONFIGURATION

Device initialization and IP setting can be finished with the "ConfigTool" or in the web interface. For more information, see the WEB operation manual.

- Device initialization is required during the first use and after the device is reset.
- Device initialization is available only when the IP addresses of the device (192.168.1.108 or different in case DHCP is enabled) and the PC stays in the same network segment.
- Plan useable network segments properly to connect the device to the network.
- The following figures and interfaces are for reference only, and the actual product shall prevail.

### 4.1 - Initializing Device (LAN connection)

1. Download the required software using the link provided at the end of the Guide.
2. Double-click "ConfigTool.exe" to open the tool.
3. Click

The Modify IP interface is displayed. See Figure 2-1.

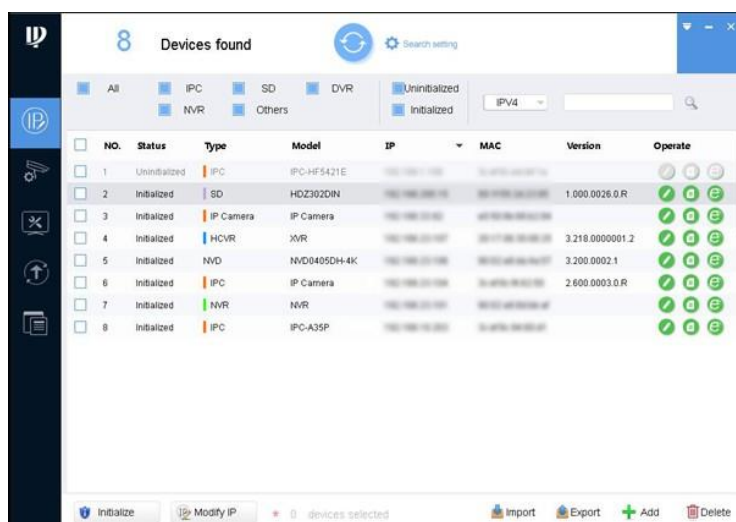


Figure 2-1 Modify IP interface

- 4. Click Search setting. The Setting interface is displayed.
- 5. Enter the start IP and end IP of the network segment in which you want to search for the devices, and then click OK.
- 6. Select one or several devices with Uninitialized Status, and then click Initialize. The Device initialization interface is displayed.
- 7. Select the devices that need initialization, and then click initialize. The password setting interface is displayed. See Figure 2-3.

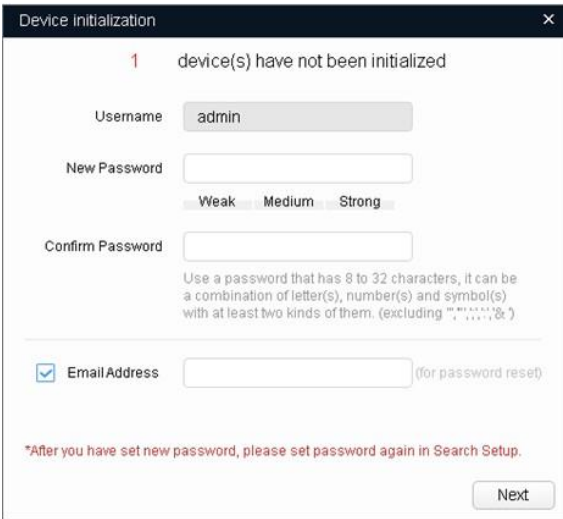
The 'Device initialization' window shows a message that 1 device has not been initialized. It includes fields for Username (admin), New Password, Confirm Password, and an optional Email Address. Password strength indicators (Weak, Medium, Strong) are shown. A note specifies password requirements: 8-32 characters, including letters, numbers, and symbols, with at least two different types. A 'Next' button is at the bottom right.

Figure 2-2 Password setting interface

- 8. Set and confirm the password of the devices, and then enter a valid email address. Click Next. The final setting interface is displayed. The password can be modified or reset in System Settings.
- 9. Select the options according to your needs and then click OK. The Initialization interface will be displayed once initialization is completed. Click the success icon (✓) or the failure icon (⚠) for the details.
- 10. Click Finish. The device status in the Modify IP interface (Figure 2-1) turns to Initialized.

4.2 - Modifying Device IP Address (LAN connection)

Note

- You can modify the IP address of one or multiple devices at one time. This section is based on modifying IP addresses in batches.
- Modifying IP addresses in the batch is available only when the corresponding devices have the same login password.

- 1. Follow Steps 1 to 4 in 2.2 to search for devices in your network segment.

Important

After clicking Search setting, please make sure the username and password are the same as when you set during initialization, otherwise, “wrong password” will be displayed.

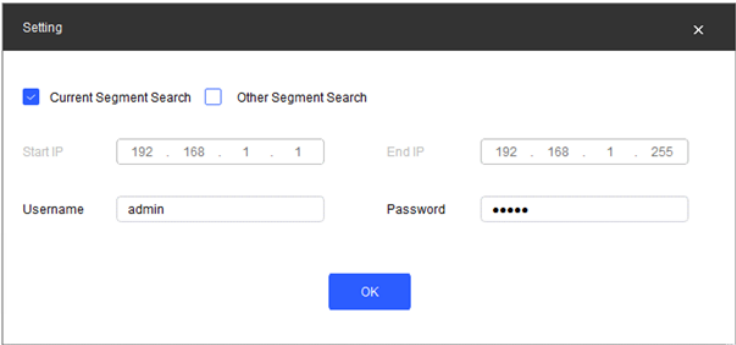
The 'Setting' window allows selection between 'Current Segment Search' and 'Other Segment Search'. It contains fields for Start IP (192.168.1.1), End IP (192.168.1.255), Username (admin), and Password (masked with dots). An 'OK' button is centered at the bottom.

Figure 2-3 Verify username and password

- 2. Select the devices for which IP addresses need to be modified, and then click Modify IP. The Modify IP Address interface is displayed. See Figure 2-4.

The 'Modify IP Address' window shows 'Mode' set to 'Static' (with 'DHCP' as an option). It includes input fields for Start IP, Subnet Mask, and Gateway. A 'Same IP' checkbox is next to the Start IP field. At the bottom, it shows 'Selected number of devices: 11' and an 'OK' button.

Figure 2-4 - Modify IP Address interface

3. Select Static mode and enter start IP, subnet mask, and gateway.

#### Note

- IP addresses of multiple devices will be set to the same if you select Same IP.
  - If a DHCP server is available in the network, devices will automatically obtain IP addresses from the DHCP server when you select DHCP.
4. Click OK.

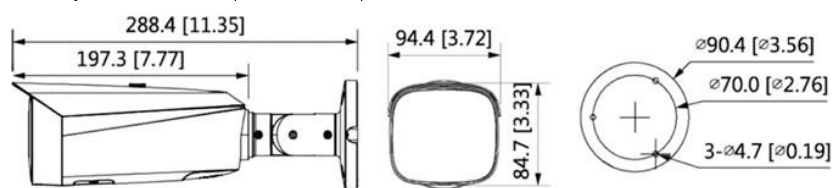
### 4.3 - Logging into the Web Interface

1. Open Internet Explorer browser, enter the IP address of the device in the address bar, and press Enter. If the setup wizard is displayed, follow the instructions to finish the settings.
2. Enter username and password in the login box, and then click Login.
3. For the first-time login, click Click Here to Download Plugin and then install the plugin as instructed.
4. The main interface is displayed.

## 5 INSTALLATION

### 5.1 - Dimensions

The following figures are for reference only, and the actual product shall prevail.

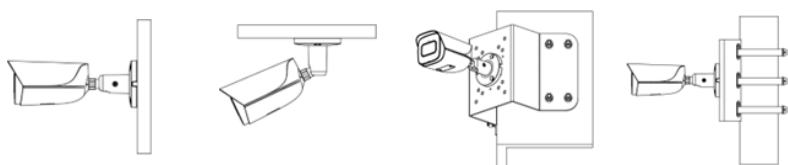


### 5.2 - Installing the Device

#### 5.2.1 - Installation method

- The tool required for the installation such as an electric drill is not provided in the package.
- Different mounts used in the installation are sold separately.
- Additional information can be found in the online documentation. Follow the link at the end of the Guide.

#### Bullet Camera





### 5.2.2 - Installing SD Card (Optional)

- SD card slot is available with selected models.
- Disconnect the power before installing or removing the SD card.

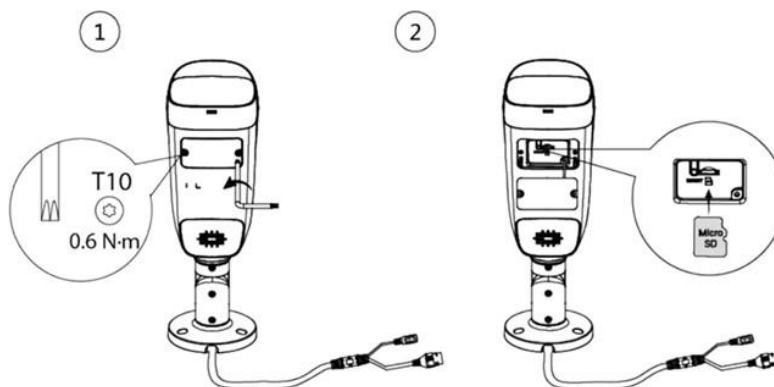


Figure 3-2 Installing SD card (Unit: mm[inch])

### 5.2.3 - Attaching Device

Make sure the mounting surface is strong enough to hold at least three times the device weight.

- To install the device with the cable going through the mounting surface refer to diagram A in the Installation Guide.

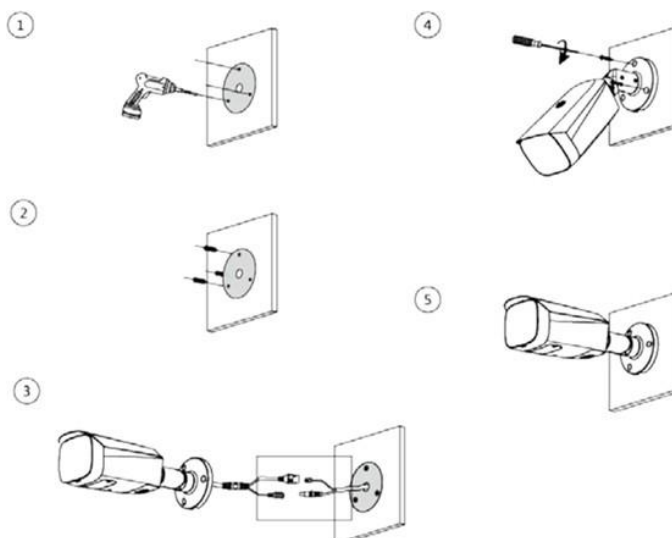


Figure 3.3 A - Cable going through the mounting surface

- To install the device with the cable going through the side cable tray refer to diagram B in the Installation Guide

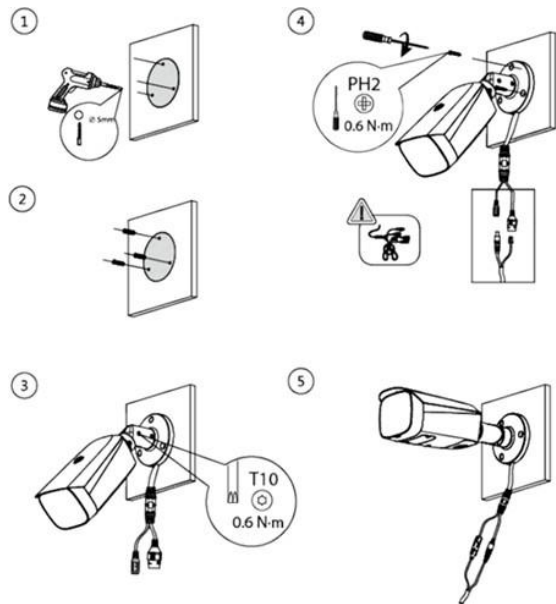
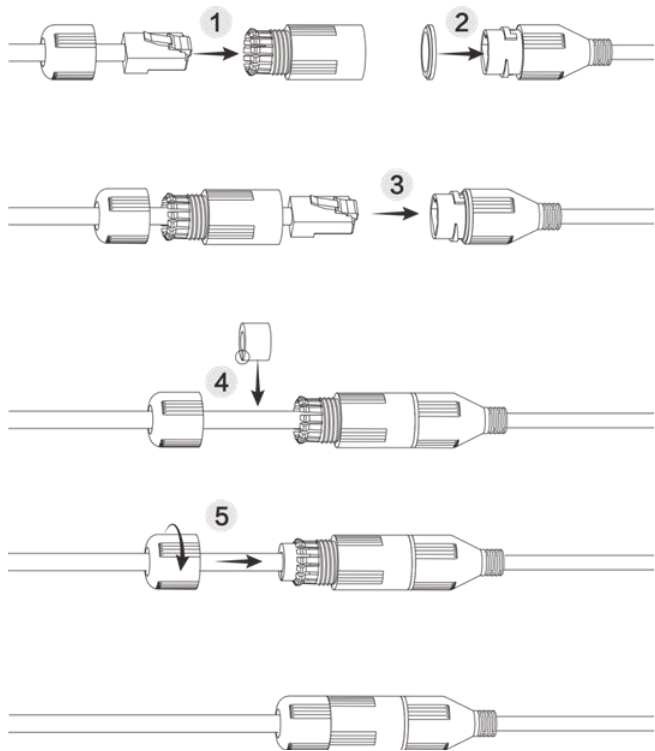


Figure 3.4 B - Cable going through the side cable tray

**5.2.4 - Installing Waterproof Connector (Optional)**

This part is only needed when there is a waterproof connector that comes with the device and the device is used outdoors.



## 5.2.5 - Adjusting Lens Angle

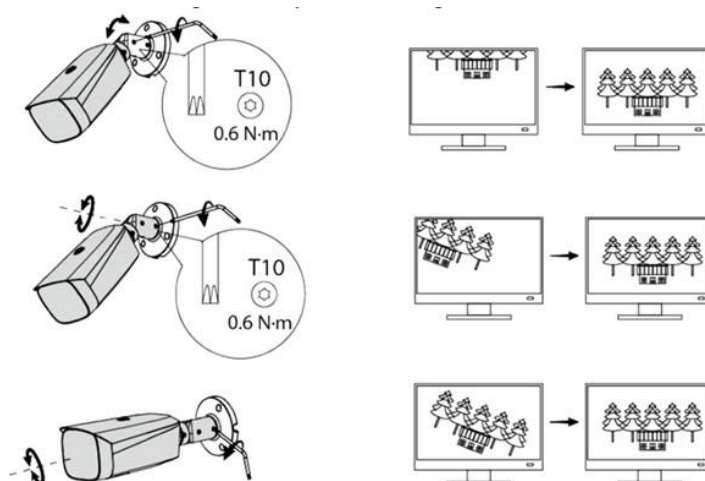


Figure 3.5 Adjusting lens angle

## 6 ADDITIONAL INFORMATION

For more information and to download the required software browse the following web page:



<https://www.niceforyou.com/node/2202?term=IS0897A00&cerca=SearchDownload&v=7#>



Nice SpA  
Oderzo TV Italia  
info@niceforyou.com

[www.niceforyou.com](http://www.niceforyou.com)