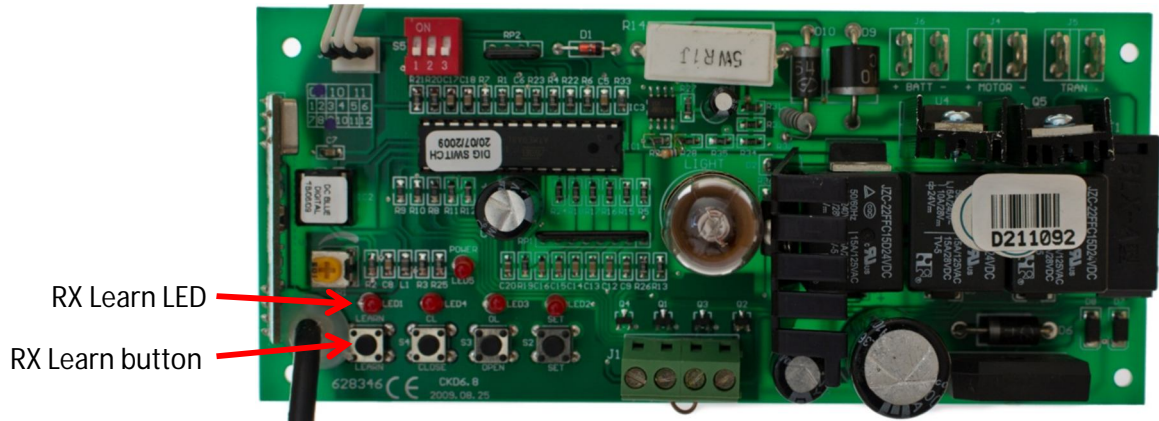



How to program a remote into your:  
**DC BLUE DIGITAL version 1**




**ET BLUE**






**Compatible with both the  
 ET Blue and ET BLU MIX ranges of remotes**

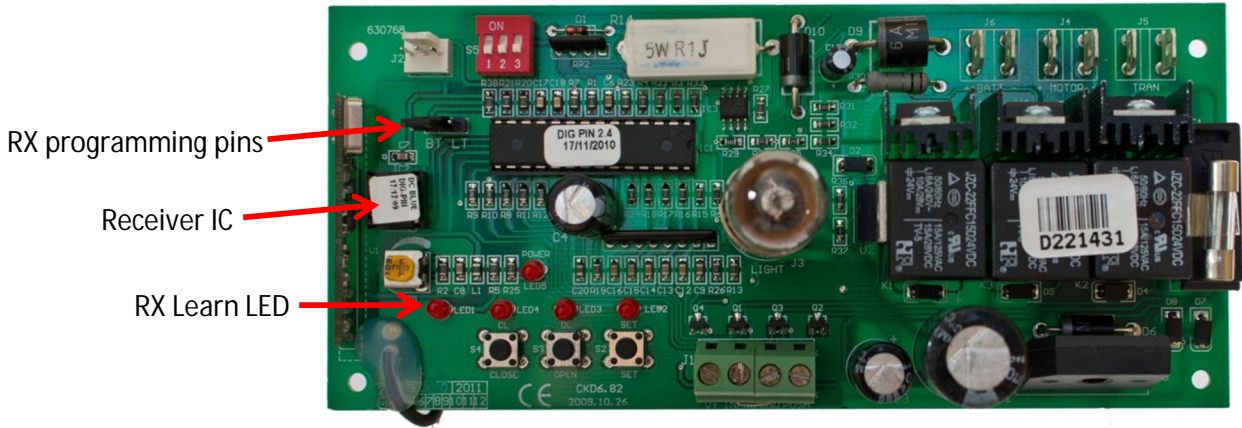
(NB. Your ET BLU MIX remote button must be set to old code for use with this receiver)

**ET BLU MIX**






Learning a remote transmitter button in the receiver for open/close operation: - (15 user memory)		
Action	Pictorial confirmation	Response
Press and hold the required remote transmitter button		RX Learn LED flickers lightly.
Press and hold the RX Learn button.		RX Learn LED flashes Confirmation. 1 flash = First transmitter learnt. 2 flashes = Successful there is still memory available. Multiple rapid flashes = memory full.
Release the RX Learn button once the RX Learn LED flashes confirmation.		RX Learn LED remains lit in standby.
Release remote transmitter button		

How to program a remote into your:  
**DC BLUE DIGITAL version 2**



 <p><b>ET BLUE</b></p>	<p><b>Compatible with both the                  ET Blue and ET BLU MIX ranges of remotes</b></p> <p>(NB. The ET BLU MIX remote button must be set to the old ET Blue code for use on this motor if the receiver IC has no © logo on it.)</p>	 <p><b>ET BLU MIX</b></p>
---	--	--

Learning a remote transmitter button in the receiver for open/close operation: - (15 user memory)		
Action	Pictorial confirmation	Response
Press and hold the required remote transmitter button		RX Learn LED flickers lightly.
Short circuit the middle RX programming pin to the BT pin.		RX Learn LED flashes Confirmation. 1 flash = First transmitter learnt. 2 flashes = Successful there is still memory available. Multiple rapid flashes = memory full.
Remove the short circuit once the RX Learn LED flashes confirmation.		RX Learn LED remains lit in standby.
Release remote transmitter button		